



Energy for  
generations

# **Bunclody - Shillelagh 38 kV Overhead Line**

## **Typical Sample 38 kV Structure Imagery**







Energy for  
generations

# Typical 38 kV Lines within local landscape



\* Typical 38 kV Single pole (Shorter span technology)



\* Typical 38 kV Single pole



\* Typical 38 kV Single pole



\* Typical 38 kV Double Pole (longer span technology)



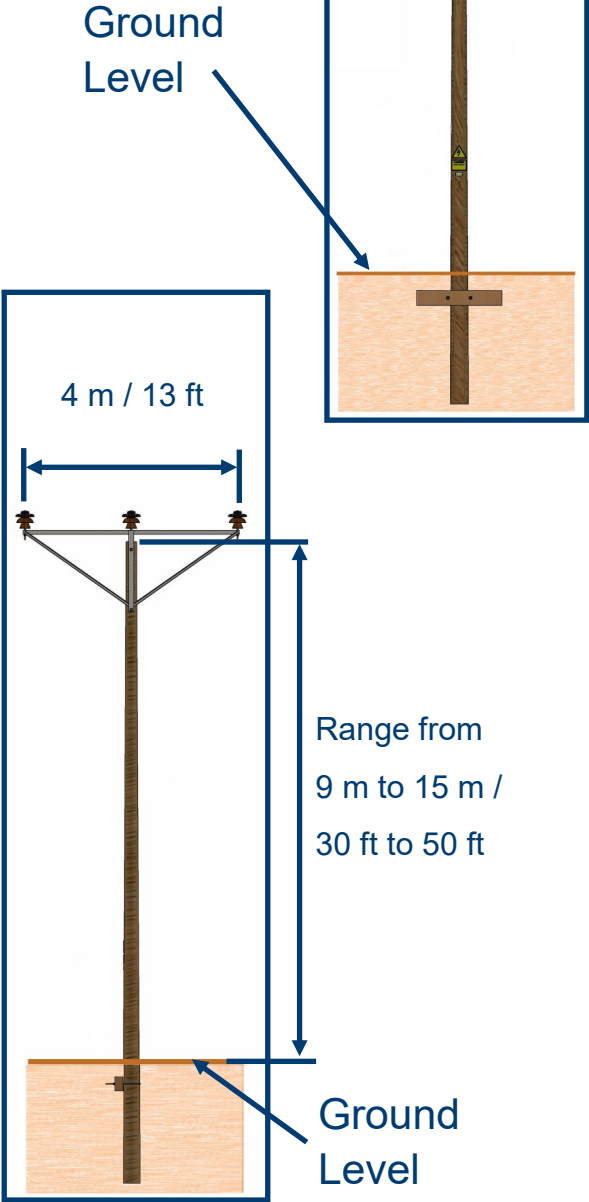
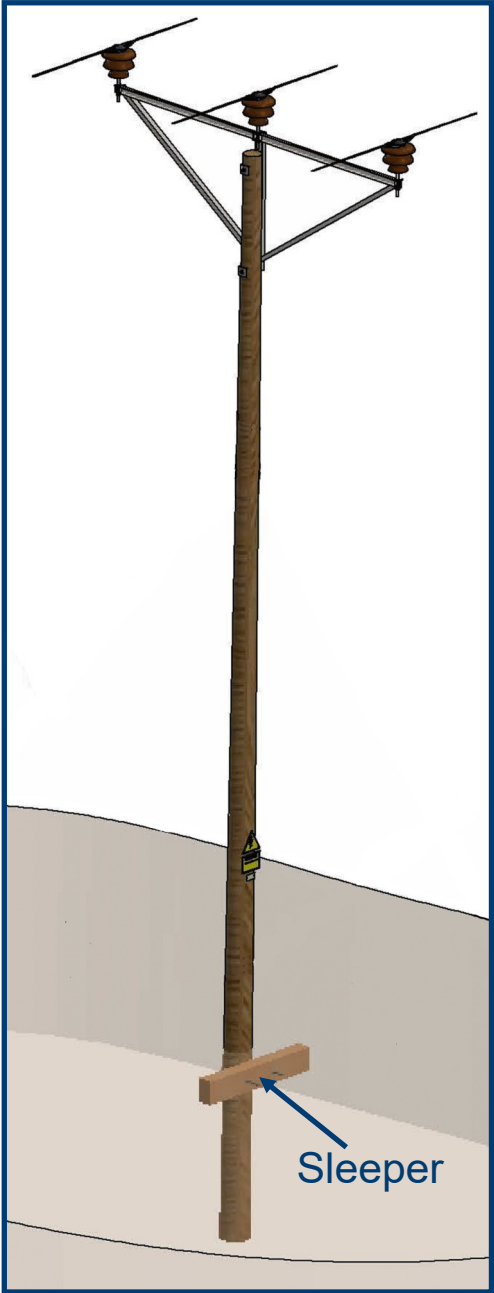
\* Typical 38 kV Double Pole (longer span technology)



\* Typical 38 kV Double Pole (longer span technology)



# Single Pole Intermediate Structure



\* Shorter Spans



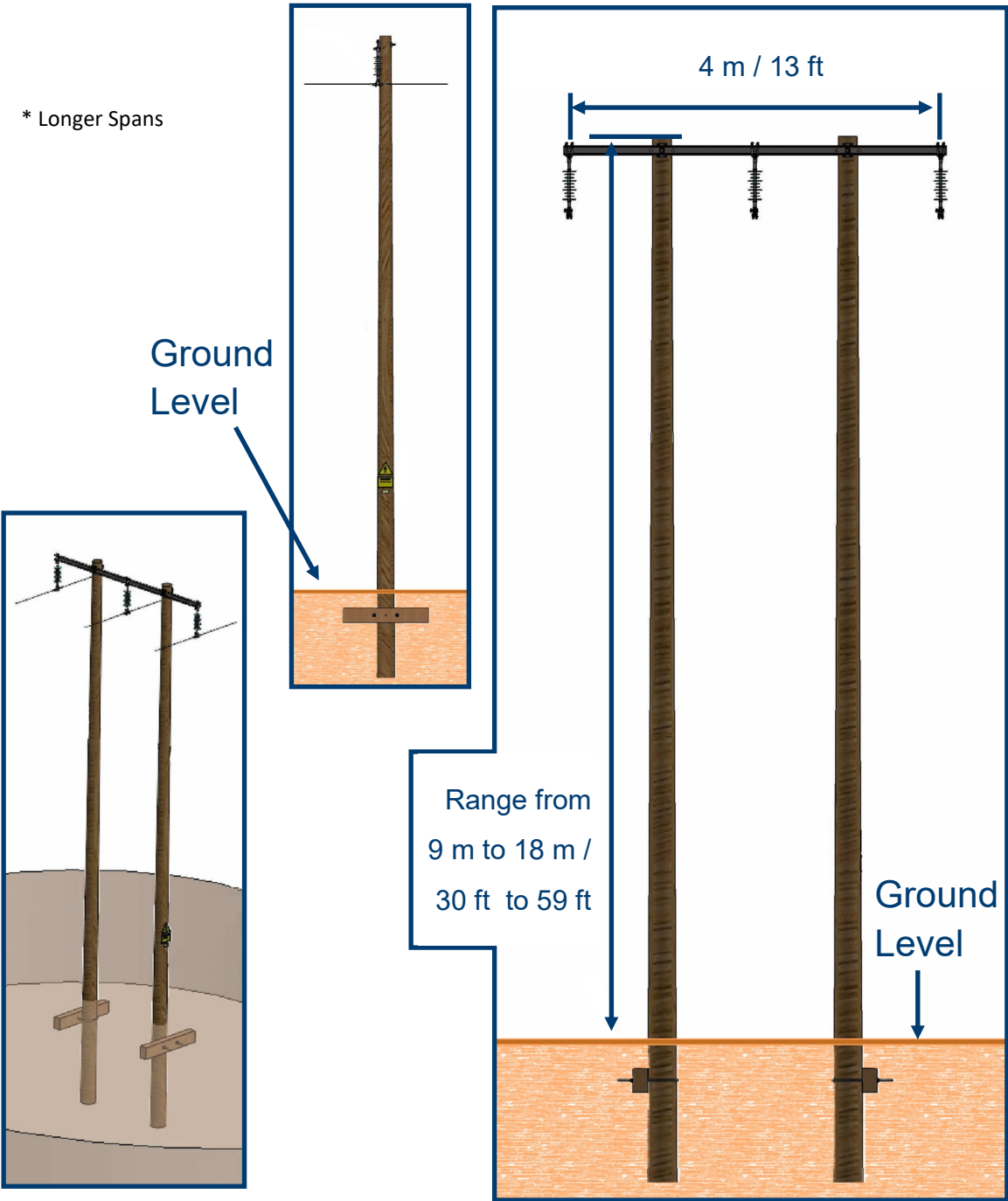


Energy for generations

# Double Pole Intermediate Structure



\* Longer Spans

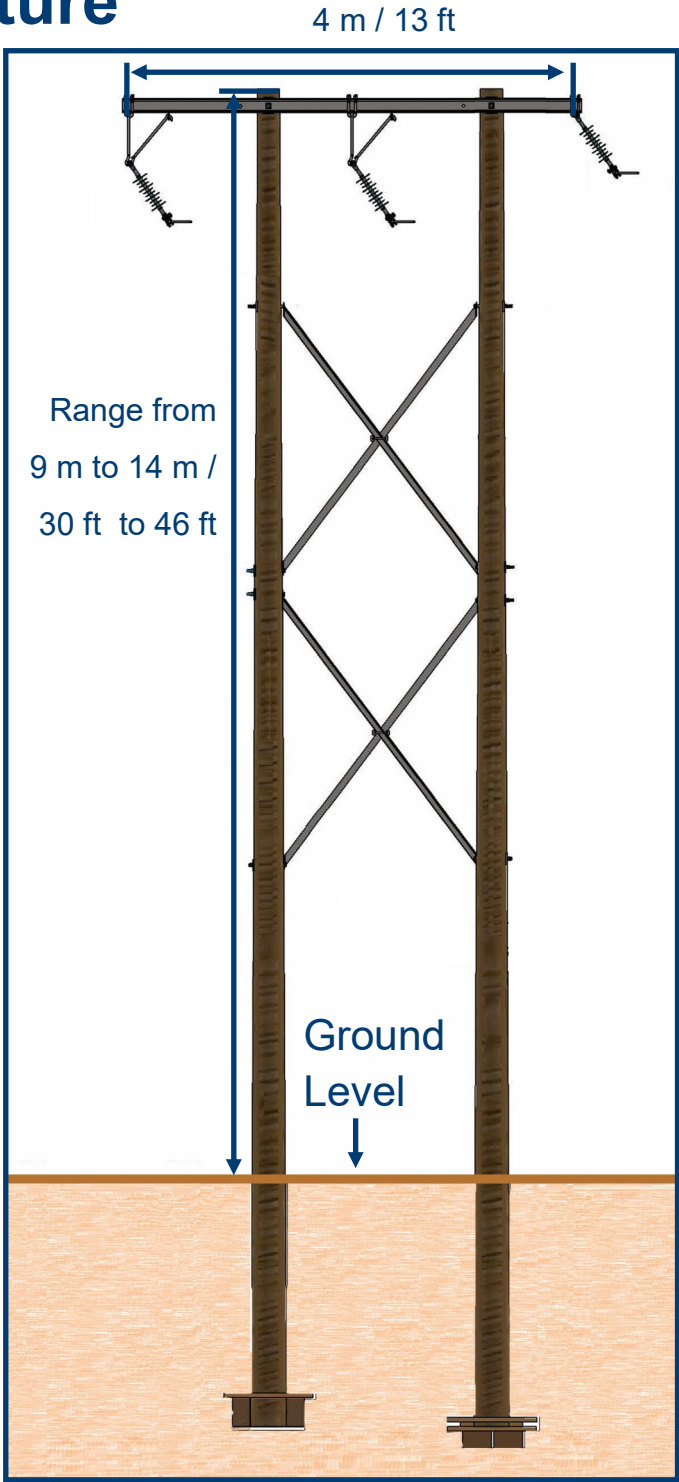
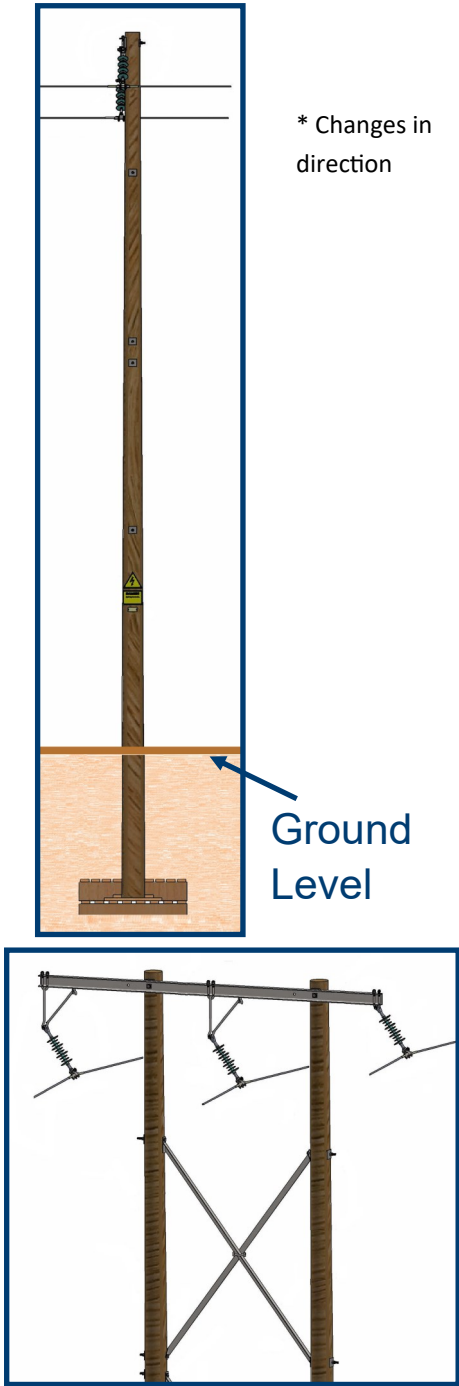






Energy for generations

# Suspension Light Angle Structure

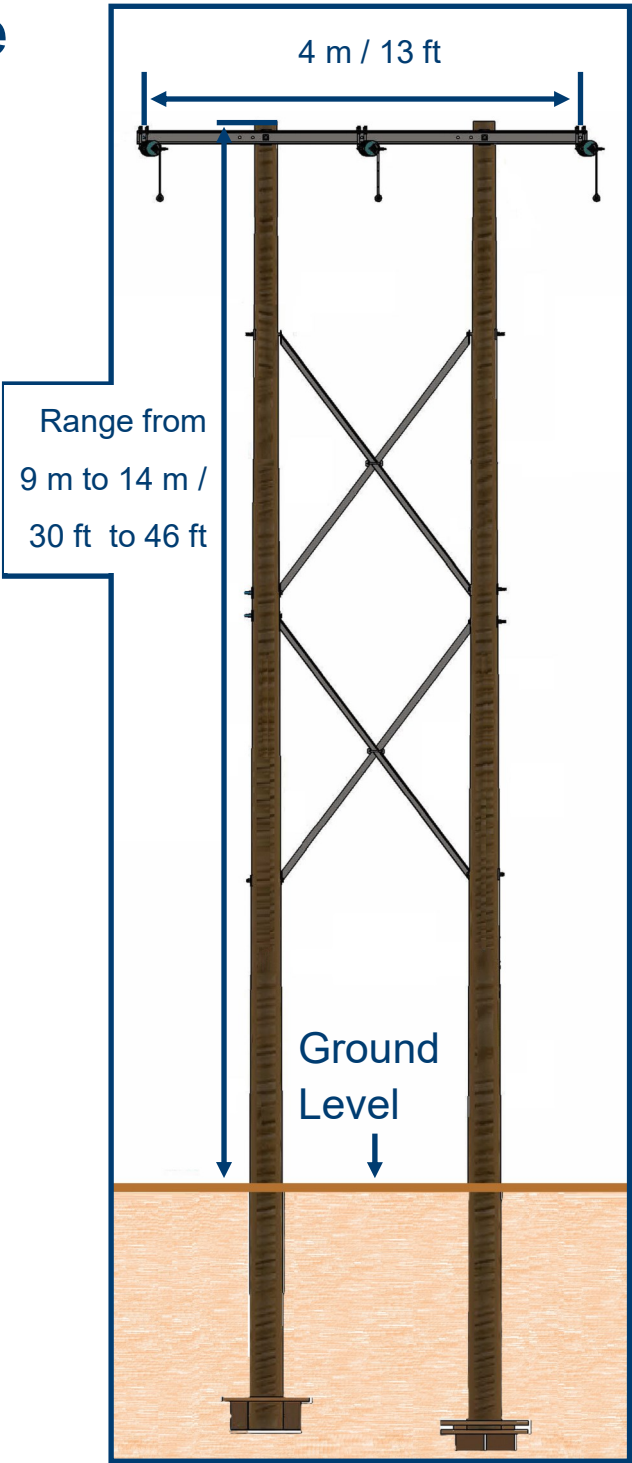
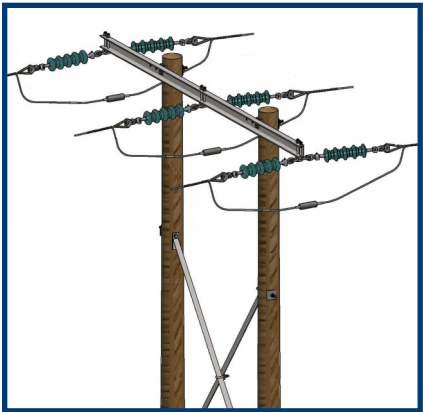






Energy for generations

# Tension Light Angle Structure

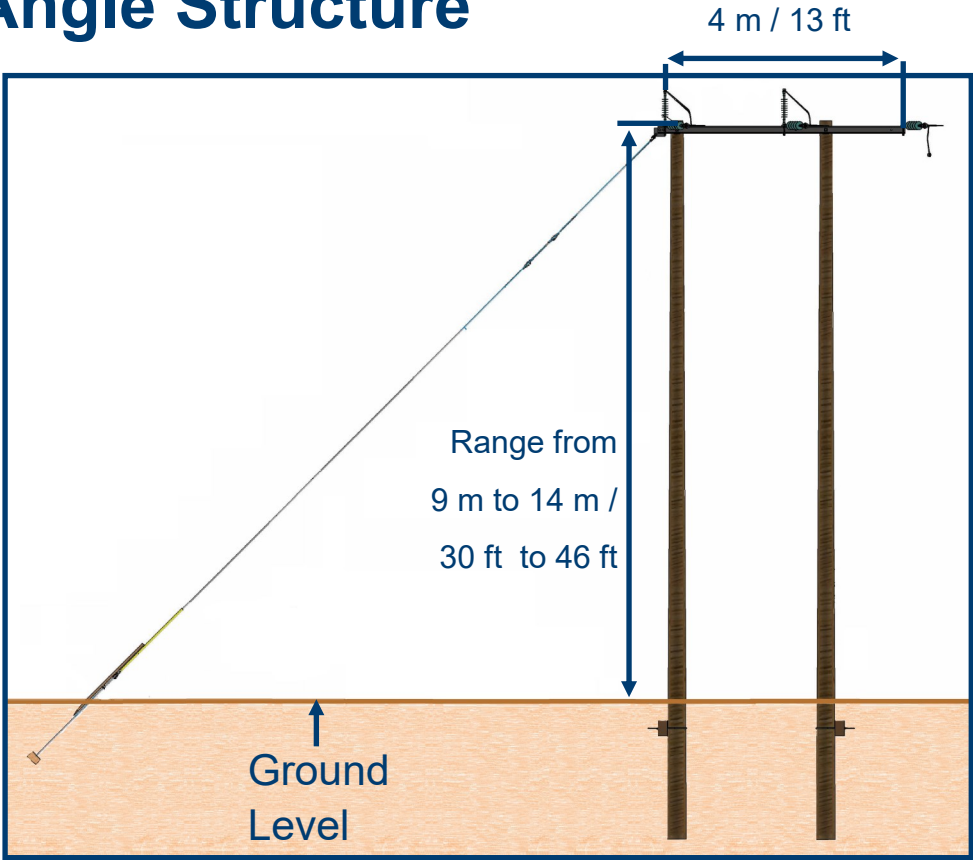




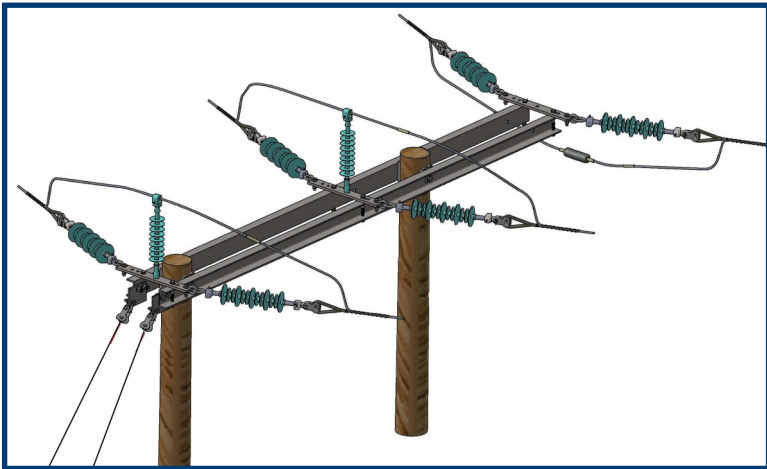


Energy for generations

# Tension Heavy Angle Structure



\* Larger changes in direction





# Mast



\* Termination in substations or significant changes in line direction.

